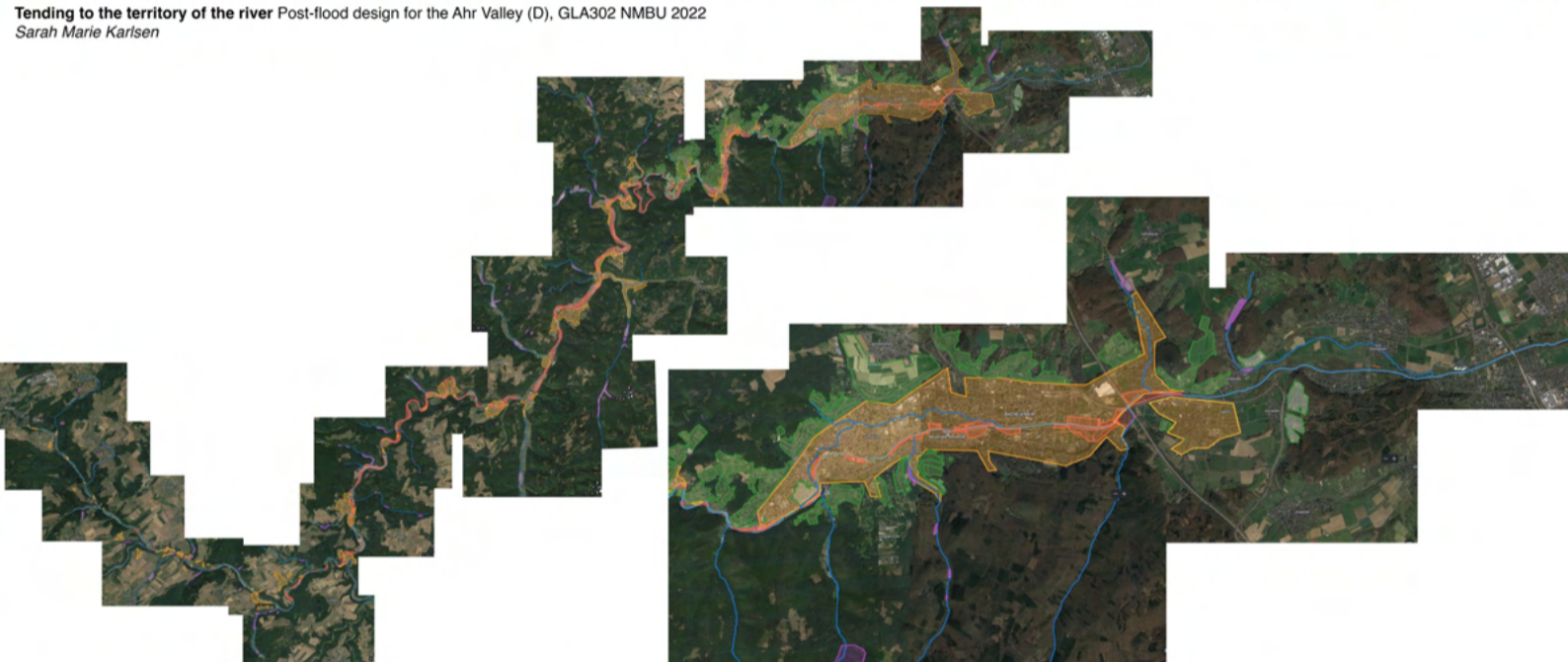




(New York Times)

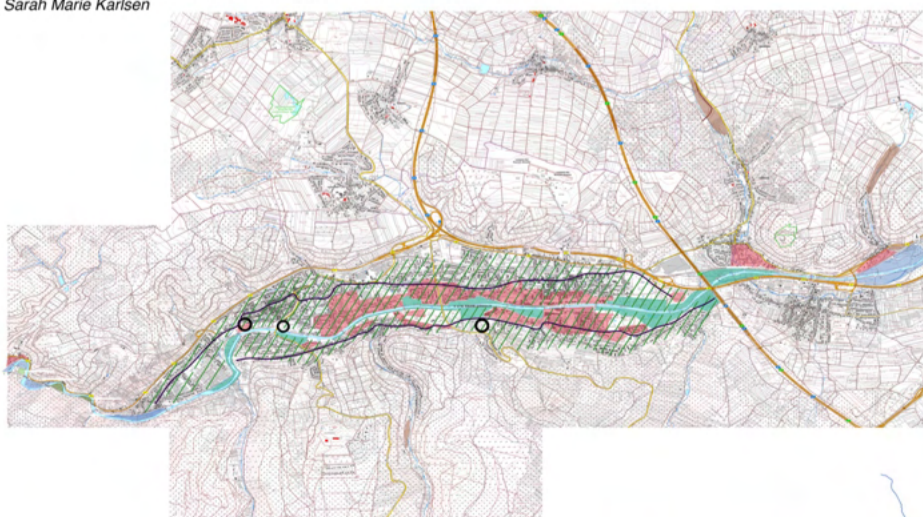


Bad Nauener-Ahrweiler
Flood of July 2021



- Blue River Ahr
- Blue Tributaries
- Red Open Spaces
- Orange Settlement
- Purple Vineyards
- Brown Upper Potential Grounds

First strategy



Our proposal for the city of Bad-Nauener includes small and large measures and interventions that together will make a meaningful impact for reducing the risk of disaster in the case of future flooding events.



Future strategy

When considering the future of Bad-Nauener, we propose that all new development should happen in a safe distance from the river bed. Making room for the river can be crucial for the city's safety from future flooding events. Based on the principle of redundancy, we suggest that the city should be split back, away from the river bed and function as two independent city halves in the case of major flooding.



- Green Detention Park
- Light Green Detention Farm
- Red Floodproof buildings
- Orange Watershed practices
- Blue Widening river-simple detention
- Light Blue Floodable park-Bad Nauener
- Green with diagonal lines Sponge city practices
- Black circle Emergency islands
- Blue wavy line New Avenue